



**SUBARU 4 WHEEL DRIVE WAGON.
NOW YOU CAN DO YOUR TRUCKIN' IN A CAR.**

OFFICIAL CAR OF THE U.S. SKI TEAM.



STANDARD EQUIPMENT

AM push button radio
Tinted glass all around
Hatch back rear door
Custom steering wheel
Carpeted cargo area
Electric rear window defogger
4 speed all synchro transmission
Adjustable reclining front bucket seats with integral headrests / All purpose radial tires
Assist grips / Rear window washer and wiper / Deluxe interior trim / Map light / Arm rests
1600cc SEEC-T engine / Trip meter / Front wheel drive—4 wheel drive

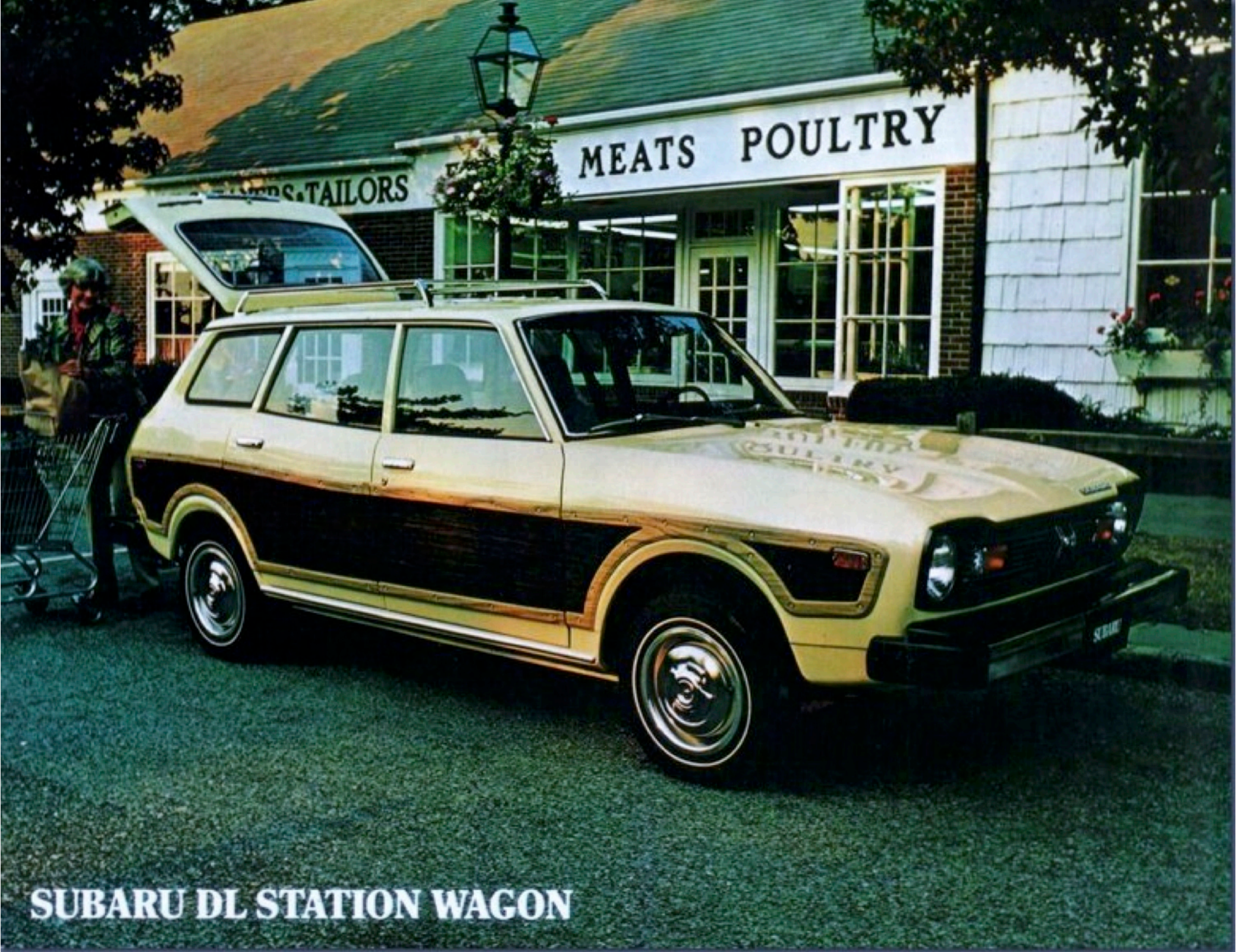
Cigarette lighter
Door-to-door carpet
Vinyl interior
Fold down rear seat
Day-night inside mirror
Rack and pinion steering
Power assist front disc brakes

OPTIONS

Grill protector / Steel skid plate / Winch bracket / Power winch / Spoked steel wheel
Luggage rack / Wheel trim rings / Rally stripe / Wagon side trim

SUBARU

INEXPENSIVE. AND BUILT TO STAY THAT WAY.



SUBARU DL STATION WAGON

SUBARU DL STATION WAGON

The Subaru DL Station Wagon is built to carry a heavy load. And priced to take a load off your mind. What's more, when you see all the standard equipment it comes with you'll understand why we call it the wagon loaded with extras.

Standard Equipment: 4 speed all syncro transmission. AM push button radio. Adjustable reclining front bucket seats with integral headrests. Vinyl interior. Door to door carpeting. Cigarette lighter. Arm rests. Tinted glass all around. Folding rear seat. Hatch back rear door. Adjustable heavy duty suspension. 155 SR 13 white sidewall steel belted radial tires. Custom center console. Electric rear window defogger. Assist grips. Day/night inside mirror. Deluxe interior trim. Trip meter. Map light. Power assist front disc brakes. Carpeted cargo area. Front wheel drive. Rack and pinion steering. 1600cc SEEC-T engine.

Optional automatic transmission available.

Wheel trim rings, wagon side trim and luggage rack, as shown in photo, are extra cost options. Specifications are subject to change without notice.

FIGURE YOUR DEAL

MODEL:	
BASE PRICE	
OPTIONS/ ACCESSORIES	
TOTAL	
TRADE IN ALLOW.	
TOTAL	
TAX & LICENSE FEE	
TOTAL DELIVERED PRICE	

TRANSMISSION & MILEAGE CHART

Transmission	National M.P.G. Highway/City	California M.P.G. Highway/City
4 Speed	38/28	32/21
Automatic	31/25	26/20

NOTE: Based on 1977 EPA test estimates. Your mileage may vary because of the way you drive, driving conditions, the condition of your car, and whatever optional equipment you may have.

**SUBARU
INEXPENSIVE.
AND BUILT TO STAY
THAT WAY.**



The Subaru 4 Wheel Drive Wagon is a multi-purpose station wagon. So you get the ride and comfort of an automobile combined with the versatility of a 4 Wheel Drive vehicle.

WORRY ABOUT WHERE YOU WANT TO GO, NOT WHETHER YOU CAN GET THERE

Our car is equipped with Front Wheel Drive. The engine is over the front wheels. So the wheels that drive the car also steer it. Making our car a pleasure to drive even when the driving's not such a pleasure. Like when there are more holes than highway. Or on wet or icy pavements. The Front Wheel Drive gives you better handling and stability, and better traction.

And if things really get tough, it will still be smooth sailing. Because with just a flick of a lever, inside the car, you can have 4 Wheel Drive. Then all 4 wheels are pulling for you.

We're not the only ones who think Subaru can take what you can give it. The Subaru 4 Wheel Drive Wagon is the Official Car of the U.S. Ski Team. Because what goes down the hill must first get up it. But even if the snowiest mountain you have to climb is your driveway, it's nice to know you'll be able to do it.

WHAT'S MORE, IT COSTS LESS

Until now, if you wanted 4 Wheel Drive, you had to settle for a truck-like vehicle. It took the bumps, but so did you. That's why the Subaru 4 Wheel Drive Wagon is truly remarkable. You get all the riding comfort of an automobile plus the versatility of 4 Wheel Drive. And because it's a car not a truck, we price it like a car, not a truck.





IT WON'T EXHAUST YOUR GAS BUDGET

You not only get the price but the mileage of an economy car. 38 MPG highway and 28 city. (In California: 32 highway and 21 city.) And that's not just the way we figure it. These figures are based on 1977 EPA test estimates for Subaru wagons with manual transmission. Of course, your actual mileage may vary because of the way you drive, driving conditions, the condition of your car, and whatever optional equipment you might have. And that's not the only way we save you money.

Our high efficiency SEEC-T engine burns clean. So clean it doesn't require an expensive, replacement-prone catalytic convertor. And it runs on regular gas.

OUR STANDARDS ARE HIGHER

Our list of standard equipment reads like that of a luxury car. For instance: Tinted glass all around, hatch back door, AM push button radio, power assist front disc brakes, door-to-door carpeting, and all purpose radial tires to really get a grip on things. There is also an electric rear window defogger, and rear window washer/wiper to let you see the world coming and going. In fact, nowhere in the world can you get a car like this with so many features for only \$4,199.00* (In California, \$4,317.00.†)

All in all, we think the Subaru 4 Wheel Drive Wagon is the most versatile family car around. But the only way to fully appreciate all that our wagon has to offer you is to Test Drive it. And that's one of the best offers you may get from an automobile company for a long time.

*Total POE - not including dealer prep, inland transportation and taxes. Wagon side trim, luggage rack, and wheel trim rings are extra-cost options.

†Total POE - not including tax, license, and inland transportation. Wagon side trim, luggage rack, and wheel trim rings are extra-cost options.